

AREA: BAILDON

Site count	Capacity Overview	Headline Analysis	Detailed Tables
-------------------	--------------------------	--------------------------	------------------------

ALL SITES		SITES WITHIN TRAJECTORY (DELIVERABLE OR DEVELOPABLE)	
Total No Of Sites	12	No of Green Field Sites	6
Total Area (Ha)	24.81	No Of PDL Sites	3
RUDP Phase 1 Housing Sites	3	Mixed PDL / Green Field	1
RUDP Phase 2 Housing Sites	3		
Sites with Outline / Full pp for Housing	2	Wholly / mainly within flood zone 2	1
Suitable Now	8	Wholly / mainly within flood zone 3a	1
Potentially Suitable (Policy Constraints)	4	Wholly / mainly within flood zone 3b	
Potentially Suitable (Physical Constraints)		Within / partly within green belt	2
Unsuitable		Within / partly within local wildlife designations	
		Within partly within local green space designations	2

DWELLING CAPACITY (Based on Median of Upper and Lower)							
	No Of Sites	Hectares	Short	Medium	Long	Total	% of District Total
	10	23.98	192	283	193.5	669	1.7%

HEADLINES / MAIN POINTS

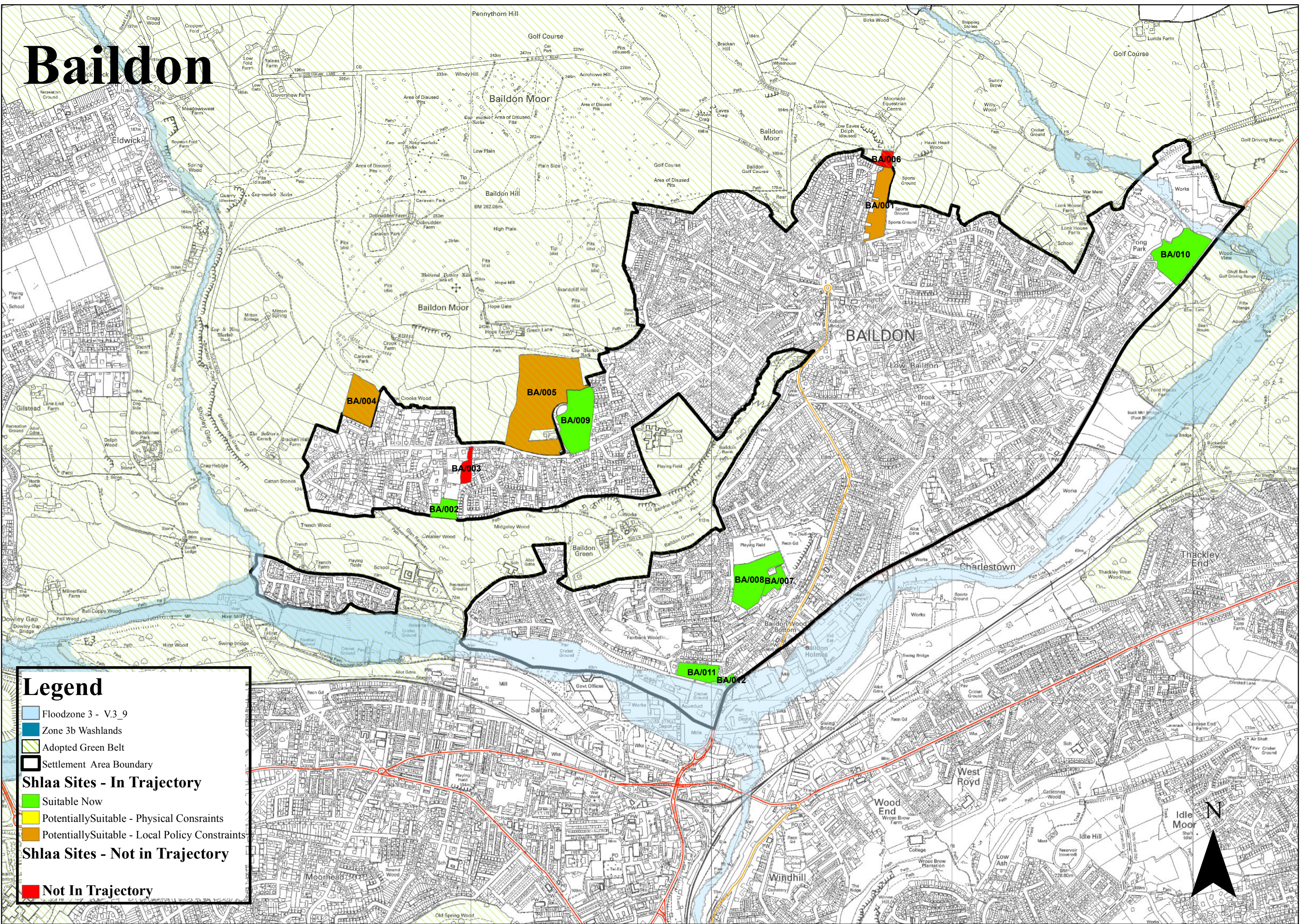
Baildon has a number of undeveloped housing sites identified in the RUDP, a number of which have constraints that need to be resolved before they can be delivered in the short term. Further development opportunities have been identified outside of the main urban area on sites protected as either green belt or as green space allocations. There are limited other opportunities for recycling of land except on sites already identified for development.

	‘Deliverable Sites’			‘Developable Sites’								
	SHORT TERM Years 1-6			MEDIUM TERM Years 7-12			LONG TERM Years 13-17			TOTAL		
	Lower Forecast	Upper Forecast	Mid Point	Lower Forecast	Upper Forecast	Mid Point	Lower Forecast	Upper Forecast	Mid Point	Lower Forecast	Upper Forecast	Mid Point
Baildon Trajectory Total	187	197	192	239	327	283	187	200	193.5	613	724	668.5
Green Field	50	50	50	154	223	189	187	200	193.5	391	473	432
Mixed				85	104	95				85	104	95
PDL	137	147	142							137	147	142
PDL Consolidated*	137	147	142	43	52	48				230	199	215
PDL %	73.2	74.6	74	18.	15.9	17				37.5	27.4	32
Baildon Residual										0	47	23
Residual – GF										0	47	23
Residual – Mixed												
Residual PDL												
Baildon Capacity Total										613	771	692

	No of Sites	Hectares	Dwellings
Suitable Now	7	11.69	361
Potentially Suitable – Policy Constraints	3	12.29	308
Potentially Suitable – Physical Constraints			
Unsuitable Sites			

		SHORT TERM			MEDIUM TERM			LONG TERM			TOTAL		
		Lower Forecast	Upper Forecast	Mid Point	Lower Forecast	Upper Forecast	Mid Point	Lower Forecast	Upper Forecast	Mid Point	Lower Forecast	Upper Forecast	Mid Point
Baildon Trajectory Total		187	197	192	239	327	283	187	200	193.5	613	724	668.5
	Suitable Now	187	197	192	141	196	169				328	393	361
	Potentially Suitable (Policy Constraints)				98	131	115	187	200	193.5	285	331	308
	Green Belt				48	64	56	187	200	193.5	235	264	249.5
	Other												
	Potentially Suitable (Physical Constraints)												
Residual Supply*													
Baildon Residual Supply Total											0	47	23.5
	Potentially Suitable (Policy Constraints)										0	47	23.5
	Green Belt										0	47	23.5
	Other												
	Potentially Suitable (Physical Constraints)												
Baildon Capacity Total											613	771	692

Baildon



Legend

- Floodzone 3 - V.3_9
- Zone 3b Washlands
- Adopted Green Belt
- Settlement Area Boundary
- Shlaa Sites - In Trajectory**
- Suitable Now
- Potentially Suitable - Physical Constraints
- Potentially Suitable - Local Policy Constraints
- Shlaa Sites - Not in Trajectory**
- Not In Trajectory

